

()

(ENSO)

()

//

)

() () ()
()

ENSO

(:

(.

()

()

()

()

ENSO

:

ENSO

()
() ()
() ENSO ()
() ()
() ENSO ()
()
() ENSO ENSO
() ENSO
() ENSO
() ENSO
() ENSO
() ENSO
() ENSO
() ENSO
() ENSO
() ENSO

1. El Niño – Southern Oscillation (ENSO)

()

ENSO

() % % % ()



(warm)

() ENSO (cold)

Niño 3.4

ENSO

○ /	○ /	○ /	○ /	○ /
○ /	○ /	○ /	○ /	○ /
/	/	/	/	() (km ²) (m ³ /s)

(base) (cold) (warm)
Q_{w33} (percentic)

Q_{b67}

Q_{wp}/Q_{cp} Q_{cp}/Q_{bp} Q_{wp}/Q_{bp}

Q_{w50}/Q_{b50}

)

(

)

Q_{w33}/Q_{b33}

(

()

Q_{cp} Q_{wp}

Q_{w33}/Q_{c33}

Q_{bp}

ENSO

ENSO

p,b,c,w

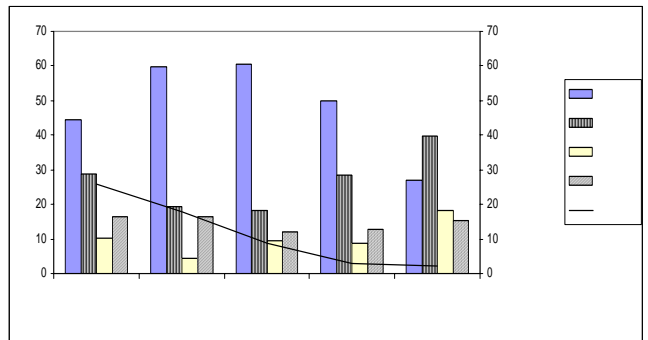
()	()

Q_{w50}/Q_{b50}

()

ENSO
()

Archive of SID



ENSO

ENSO

Q_{w50}/Q_{b50}

ENSO

()

) Q_{c50}/Q_{b50}

(

ENSO

ENSO

ENSO

ENSO

Q_{c50}/Q_{b50}

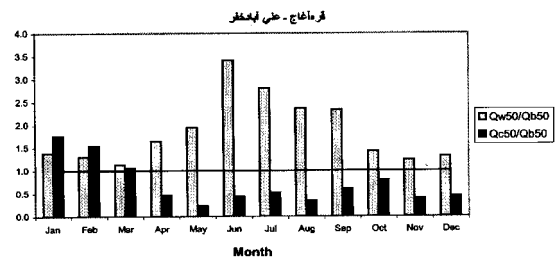
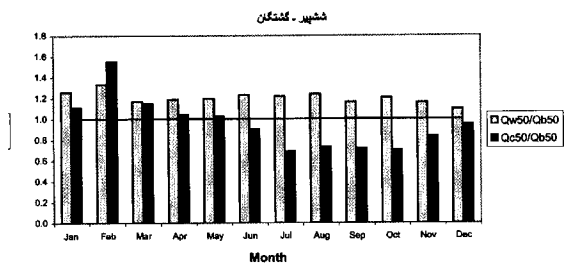
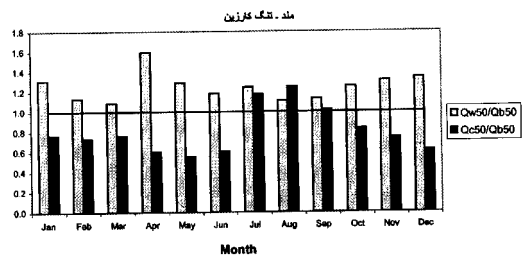
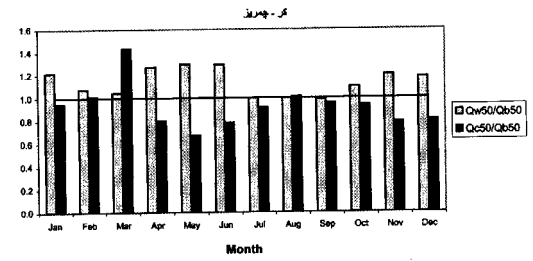
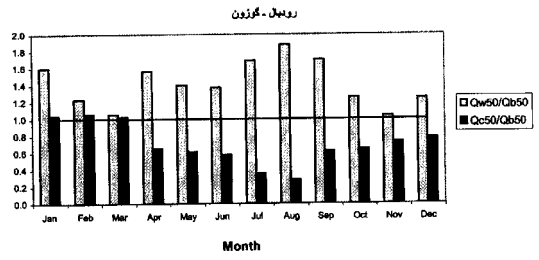
Q_{c50}/Q_{b50}

Q_{w50}/Q_{b50}

Q_{wa}/Q_{ba}

a

Q_{ca}/Q_{ba}



$Q_{c50}/Q_{b50}, Q_{w50}/Q_{b50}$

()

ENSO

()

Qw33/
Qb33

Qc67/
Qb67

()

)

(

Archive of SID

%

Qc33/
Qb33

)

()

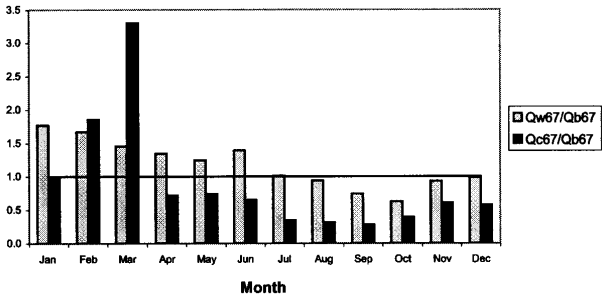
(

/

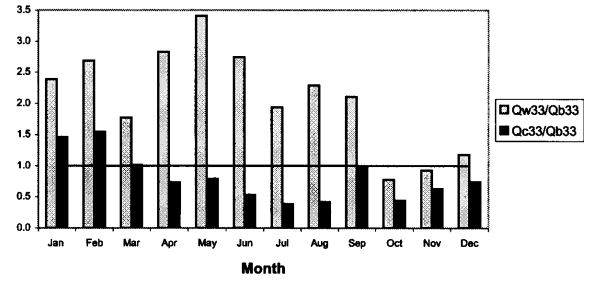
ENSO

Qw67/
Qb67

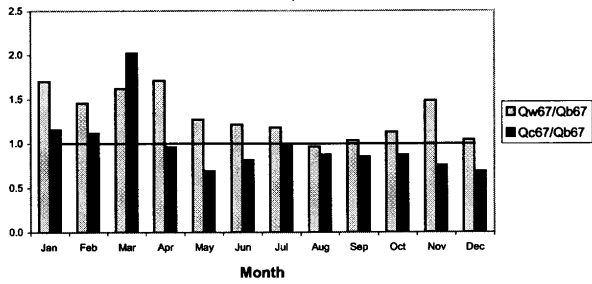
رویدال - گوزون



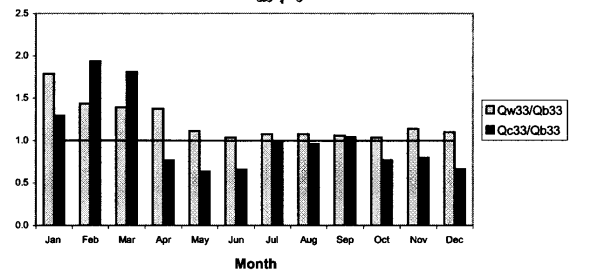
رویدال - گوزون



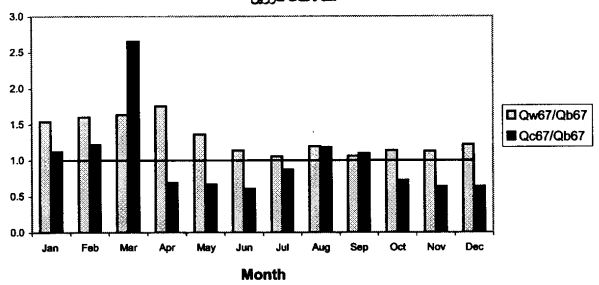
کر - چمریز



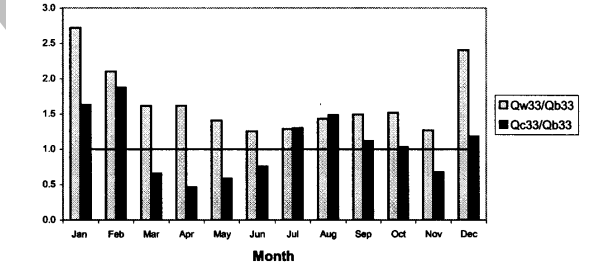
کر - چمریز



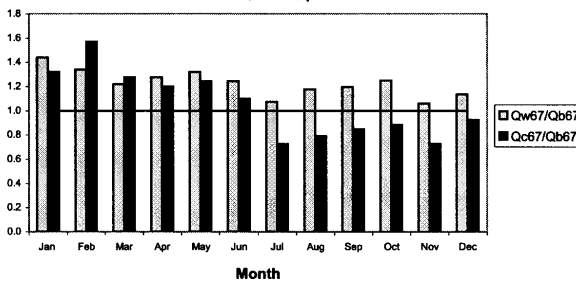
مند - تنگ کازین



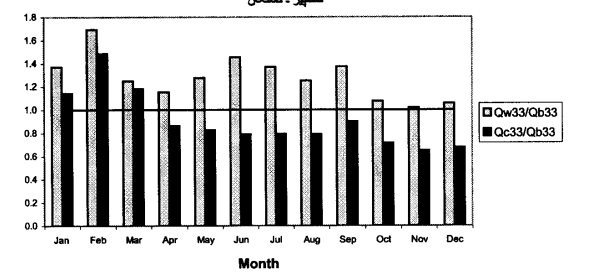
مند - تنگ کازین



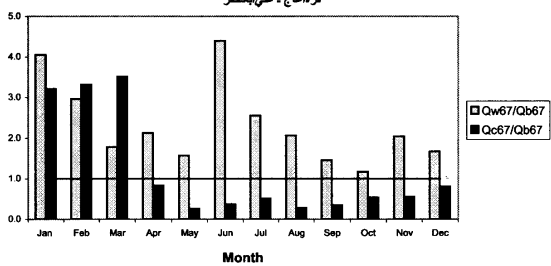
شهر - گشتگان



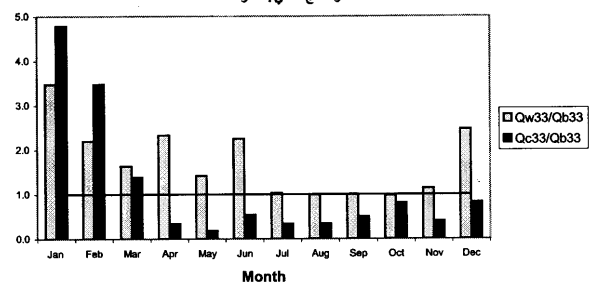
شهر - گشتگان



قراغاج - طری ایختر



قراغاج - طری ایختر



Q_{c67}/Q_{b67} Q_{w67}/Q_{b67}

Q_{w33}/Q_{b33} Q_{c33}/Q_{b33}

ENSO

REFERENCES

- Dracup, J. A. , & E. Kahya. 1994. The relationships between U. S. streamflow and La Nina events. *Water Resour. Res.*, 30(7) : 2133-2141.
- Eltahir, E. A. B. 1996. El Niño and the natural variability in the flow of the Nile River. *Water Resour. Res.*, 32(1):131-136.
- Kahya, E. , & J. A. Dracup. 1993. U. S. streamflow pattern in relation to the El Niño-Southern Oscillation. *Water Resour. Res.*, 29(8):2491-2503.
- Kahya, E. , & M. C. Karabork. 2001. The analysis of the El Niño , La Niño signals in streamflows of Turkey. *Inter. J. Climatol.*, 21:1231-1250.
- Nazemosadat , M.J. & I. Cordery. 2000a. On the relationships between ENSO and autumnal rainfall in Iran. *Inter. J. Climatol.*, 1: 47-62.
- Nazemosadat, M. J., Ghasemi, A. R. 2004. Quantifying the ENSO Related Shifts in the Intensity and Probability of Drought and Wet periods in Iran. Accepted in *Journal Of Climate*, in press.
- Piechota , T. C. , F. H. S. Chiew , & J. A. Dracup. 1998. Seasonal streamflow forecasting in eastern Australia and the El Niño-Southern Oscillation . *Water Resour. Res.*, 34(11) : 3035 – 3044.
- Reynolds, R., M. Detinger, D. Eagan, D. Stephens, L. Highland, & R. Wilson. 1998. Effects of El Niño on streamflow, Lake level, and landside potential. On line in: <http://Geochange.er.usgs.gov/sw/changes/elNiño/>.
- Sun, H. , & D.J. Fubrish. 1997. Annual precipitation and river discharges in Florida in response to El Niño and La Nina-sea surface temperature anomalies. *J. Hydrol. ,* 199:74-87.
- Trenberth , K. E. 1997. The definition of El Niño. *Bulletin of Am. Meteorol. Soc.*78(12): 2771-2777.
- Zubair, L. 2002. El Niño-Southern Oscillation influences on rice production in Sri Lanka. *Int. J. Climatol.* Vol. 22(2): 249-260.