

# SID



سرویس های ویژه



سرویس ترجمه تخصصی



کارگاه های آموزشی



بلاگ مرکز اطلاعات علمی



عضویت در خبرنامه



فیلم های آموزشی

## کارگاه های آموزشی مرکز اطلاعات علمی جهاد دانشگاهی



مباحث پیشرفته یادگیری عمیق؛ شبکه های توجه گرافی (GAN)

مباحث پیشرفته یادگیری عمیق؛  
شبکه های توجه گرافی  
(Graph Attention Networks)



آموزش استفاده از وب آو ساینس

کارگاه آنلاین آموزش استفاده از  
وب آو ساینس



کارگاه آنلاین مقاله روزمره انگلیسی

# Association of Proton Pump Inhibitor Therapy with Hepatic Encephalopathy in Hepatitis B Virus-related Acute-on-Chronic Liver Failure

Zhao-Ni Lin<sup>1</sup>; Yong-Qing Zuo<sup>1</sup>; Peng Hu<sup>1,\*</sup>

<sup>1</sup>Department of Infectious Diseases, Institute for Viral Hepatitis, Key Laboratory of Molecular Biology for Infectious Diseases, Ministry of Education, Second Affiliated Hospital of Chongqing Medical University, Chongqing, China

\*Corresponding Author: Peng Hu, Department of Infectious Diseases, Institute for Viral Hepatitis, Key Laboratory of Molecular Biology for Infectious Diseases, Ministry of Education, Second Affiliated Hospital of Chongqing Medical University, Chongqing, China. Tel: +86-2363693289, Fax: +86-2363703790, E-mail: hp\_cq@163.com

Received: November 18, 2013; Revised: January 20, 2014; Accepted: February 14, 2014

**Background:** Hepatic encephalopathy (HE) is an important neuropsychiatry complication of acute-on-chronic liver failure (ACLF). PPI therapy may increase the intestinal bacterial overgrowth and infections.

**Objectives:** The aim of this study was to assess whether PPI use in ACLF is associated with HE.

**Patients and Methods:** A retrospective case-control study was performed. Fifty five admitted patients with hepatitis B virus (HBV)-related ACLF complicated by Stage II-IV HE developed after admission between January 2008 and December 2012 were matched (by sex, age, and MELD score) with comparable HBV-related ACLF patients (n = 110) who did not develop this complication during hospitalization. We excluded combined HE upon admission and other neurological disorders in patients with ACLF. Univariate and multivariate analyses of 30 variables (laboratory examination, predisposition, treatment, etc.) before the occurrence of HE were carried out to identify the factors predictive of HE.

**Results:** In univariate analysis, patients with HE in ACLF had a significantly higher rate of PPI use (89.1%) compared with non-HE (63.6%, P = 0.001). In addition, clinical and standard laboratory variables were significantly different between the two groups regarding the infection rate, hyponatremia, alpha-fetoprotein (AFP), Arginine Hydrochloride use and Lactulose use. Logistic regression analysis was used to examine the combined effects of the variables with HE as the outcome. HE in ACLF was associated with hyponatremia (odds ratio (OR) = 6.318, 95% confidence interval (CI) = 2.803-14.241; P = 0.000), PPI use was independently associated with HE (OR = 4.392, CI = 1.604-12.031; P = 0.004), and lactulose use was protective (OR = 0.294, CI = 0.136-0.675; P = 0.003).

**Conclusions:** The occurrence of HE is associated with hyponatremia and PPI use in patients with ACLF.

**Keywords:** Hepatic Encephalopathy; Proton Pump Inhibitors; Hepatitis B Virus

## 1. Background

Acute-on-chronic liver failure (ACLF) is difficult to treat and carries a high risk of short-term mortality (1, 2), and may result in life-threatening complications such as hepatic encephalopathy (HE), infection, bleeding and hepatorenal syndrome (HRS). HE is a complex and progressive neuropsychiatric syndrome, which is one of the common manifestations of ACLF in the absence of other neurological disorders. It is characterized by changes in mental state, including a wide range of neuropsychiatric symptoms ranging from minor signs of altered brain function to deep coma. Gut-derived nitrogenous substances are universally acknowledged to play a major role in the pathogenesis of HE (3, 4). ACLF usually results following a precipitating event in the context of established cirrhosis. Patients with liver cirrhosis have been found to have

substantial derangements in the gut microecology, with significant fecal overgrowth of potentially pathogenic *Escherichia coli* and *Staphylococcal* species. Small intestinal bacterial overgrowth (SIBO) in cirrhotic patients is common and associated with systemic endotoxemia, even in the absence of overt infection (5). In addition, abnormal intestinal motility may play an important role in increasing the growth of pathogenic bacteria and the absorption of gut toxins. These may increase the intestinal absorption of ammonia that leads to an increase in the occurrence of HE. The primary treatment of HE is reducing or eliminating the increased neurotoxic ammonia levels based on the identification and treatment of the precipitating factors. Lactulose (6) and non-absorbable antibiotics (7), remain the mainstay treatment for HE.

### Implication for health policy makers/practice/research/medical education:

As to our knowledge, this is the first report that proton pump inhibitor use is associated with hepatic encephalopathy in hepatitis B Virus-related acute-on-chronic liver failure.

Copyright © 2014, Kowsar Corp.; Published by Kowsar Corp. This is an open-access article distributed under the terms of the Creative Commons Attribution License, which permits unrestricted use, distribution, and reproduction in any medium, provided the original work is properly cited.

Proton pump inhibitors (PPIs) are commonly prescribed in cirrhosis to prevent the portal hypertension bleeding, which are known to have an excellent safety profile. However, in a minority of patients, PPIs may be prescribed without clear indications or because of their propensity to develop upper gastrointestinal symptoms. PPIs, which act by reducing acid secretion, could increase the risk of gastrointestinal (GI) infections by raising the pH of the stomach and making it more prone to colonization by various pathogenic bacteria. The PPIs can disrupt the gut ecology too, they change the bacterial growth, including abnormal bacterial counts and overt SIBO (8). Moreover, gastric acid influences not only the upper gut flora, but also lower intestinal microflora. The number of bacteria in small and large bowel increases as a result of gastric hypochlorhydric conditions (9). Previous case control studies have found an increased risk of GI infections in patients taking PPIs (10). Some studies have reported that PPI therapy is associated with spontaneous bacterial peritonitis (SBP) in patients with advanced cirrhosis (11, 12). Increased ammonia-producing enteric bacteria in patients is shown to be a risk factor for HE (13). Besides, considering that patients with ACLF have a high prevalence of gastrointestinal symptoms, PPIs may increase absorption of gut-derived nitrogenous substances because of its enhancing effect on retarding gastrointestinal motility (14), delaying gastric emptying rate and decreasing gastric mucus viscosity. HE can occur either due to liver failure or due to one or more precipitating factors in a cirrhotic patient. However, these neuropsychiatric manifestations are potentially reversible, if the relevant prognostic factors for HE could be clarified, appropriate measures could be adopted to reduce the associated mortality. Numerous studies have been published concerning the prognostic factors in ACLF (15), but there is little information regarding the factors predictive of development of HE. Nevertheless, it has been recently hypothesized that PPI therapy may increase the intestinal bacterial overgrowth (11, 16), which produces more toxic substances in colon.

## 2. Objectives

The goal of the current study was to determine whether PPI use in patients with ACLF is associated with subsequent development of HE, and to compare it with other simultaneously measured clinical variables.

## 3. Patients and Methods

### 3.1. Patients and Study Design

The medical records from all ACLF patients consecutively admitted to hospital at the second affiliated hospital of Chongqing Medical University between January 2008 and December 2012 were retrospectively reviewed. At the

beginning of the study, we estimated the optimal sample size of this case control study by applying the frequency matching-design related formula. In order to improve the study efficiency and control for confounding factors, the case and control subjects were matched by sex, age, and MELD score (frequency matching). In China, as a result of the high prevalence of hepatitis B virus (HBV), chronic HBV infection is the most common cause of liver failure (17, 18). Inclusion criteria included: 1) Hepatitis B virus-related acute-on-chronic liver failure 2) Patients who had their first episode of Grade II-IV HE in the hospital for at least six days were included in the study. Exclusion criteria included: combined HE patients on admission or patients who had their first episode of HE before the sixth day after the admission (because the goal of this study was to evaluate the independent association between PPI use and HE in patients with ACLF). PPIs should be used more than 5 days to cause stable lasting acid suppression (gastric pH > 4) (19-21). Also patients who had their first episode of HE before the sixth day after the admission may not be a good candidate for studying the association between PPI and HE); concurrent viral infections (e.g. HAV, HCV, HDV, HEV, human immunodeficiency virus, cytomegalovirus, Epstein-Barr virus); liver failure due to other causes (including autoimmune, alcohol- or drug-related diseases); malignant tumors; TIPS (the proportion of these patients are few); and patients with other severe systematic or mental diseases. The study was approved by the Institutional Review Boards (IRB) for Human Subject Review at The Second Affiliated Hospital of Chongqing Medical University and all aspects of the study comply with the declaration of Helsinki. IRB committee approved that no informed consent was required because the data were going to be analyzed anonymously.

### 3.2. Related Definitions

Acute-on-chronic hepatitis B liver failure, as defined by the APASL working party, is acute hepatic insult manifesting as jaundice (serum bilirubin > 5 mg/dL) and coagulopathy (international normalized ratio [INR] > 1.5 or prothrombin activity < 40%), complicated within 4 weeks by ascites and/or encephalopathy in a patient previously diagnosed or undiagnosed with chronic liver disease (22). The severity of HE was graded as: grade 1: Euphoria or depression, mildly disturbed sleep-awake cycle, hypersomnia, insomnia; grade 2: Inappropriate behavior, disorientation, apathy, mood swings; grade 3: Very sleepy but arousable, unresponsive to verbal commands, markedly confused, combative and hyper-reflexic, and grade 4: Unconscious, coma (13). Hyponatraemia was defined as serum sodium concentration < 135 (mmol/L) (should have developed at least one episode of hyponatraemia before the occurrence of HE). PPI use definition: patients using any PPI intravenously for at least six days before the occurrence of HE at the admission time were counted as

PPI users, others were considered to be non-users. Hospitalized patients of ACLF had serious medical condition, and all received PPI intravenously in the study.

### 3.3. Recorded Parameters

Clinical and laboratory information was collected at the time of admission. Information included age, sex, MELD score; major precipitating factor before the occurrence of HE during the stay in hospital, such as: infection, upper gastrointestinal bleeding, electrolyte disorder, PPI use, lactulose use, drugs to prevent hepatic coma, use of intestinal probiotic preparations and oral antibiotics; laboratory data including albumin, aminotransferase, r-GGT, total bilirubin, direct bilirubin, and creatinine levels, urea nitrogen, and the international normalized ratio (INR) of the prothrombin time, prothrombin activity and serological tests for hepatitis B surface antigen (HBsAg), hepatitis Be antigen (HBeAg), and anti-HBe which were measured by commercially available enzyme-linked immunoassays. HBV DNA estimation was done with the real-time polymerase chain reaction (PCR) method (lower limit of detection = 50 IU/mL, Roche Taqman assay). Of the 30 variables included in the univariate analysis, we included the variables with  $P < 0.1$  which were clinically a common cause of HE into the Logistic regression. In the multivariate analysis, 14 variables were included in a stepwise regression.

### 3.4. Statistical Analysis

Statistical analyses were performed using SPSS software version 17.0. Student's t-tests or the non-parametric Wilcoxon rank sum tests were used to compare Patients' clinical and biochemical indices, and Fisher's exact tests or Pearson's chi-square tests were used for the categorical variables. Continuous variables are expressed as mean  $\pm$  standard deviation (SD); categorical variables are expressed as frequency and percentages. A P value of  $< 0.05$  was considered statistically significant. Multivariate analysis was performed by logistic regression analysis using stepwise selection (LR), and the statistical cut points giving the best possible results for sensitivity and specificity of the statistical models were determined. Estimations of risks were made using 95% confidence intervals and their associated p-value. Survival curves were derived by the Kaplan-Meier method.

## 4. Results

Charts of 449 patients with ACLF were reviewed. Fifty five consecutive hospitalized patients with HBV-ACLF who met the inclusion and exclusion criteria were enrolled in this study. In the same admission time period, 110 comparable HBV-ACLF patients without HE during hospitalization were selected as the control group, using frequency matching (by sex, age and MELD score) (Figure

1). There were no significant differences with regards to sex (males 83.6% vs. 75.5%,  $P = 0.23$ ), age (46 (37-55) vs. 43 (36-48),  $P = 0.068$ ), and MELD score ( $25.3 \pm 5$  vs.  $24.6 \pm 5.9$ ,  $P = 0.515$ ) between the two groups. Interestingly, patients with HE in HBV-ACLF had a significantly higher rate of PPI use (89.1%) compared with non-HE patients (63.6%,  $P = 0.001$ ) (Table 1). In addition, the survival rates of patients in the non-HE group (68.2%) were higher than those of the patients in the HE group (20%) ( $P = 0.000$ ).

The baseline clinical and biochemical characteristics of HE and non-HE groups are shown in Table 1. The laboratory data and virological characteristics were assessed at admission. No significant differences were observed between HE and non-HE patients with cirrhosis (50.9% vs. 51.8%,  $P = 0.912$ ) and ascites (74.5% vs. 60.9%,  $P = 0.082$ ). The level of AFP was significantly lower in patients with HE (111.6 (13-65.6)) compared with those without HE (172.7 (13-207),  $P = 0.005$ ). Otherwise, the laboratory picture was similar between the two groups, such as: RBC, HB, WBC, PLT, ALB, ALT, AST, TB, DB, GGT, Creatinine levels, Urea nitrogen, PTA%, HBV-DNA load, HBeAg status ( $P > 0.05$ ). We investigated the precipitating events associated with the development of HE. Among patients with HE, 44 of 55 patients (80.0%) had infection which was significantly higher than 68 of the 110 non-HE patients (61.8%,  $P = 0.018$ ). Furthermore, 29 out of 55 patients with HE (52.7%) had hyponatraemia, compared with only 18 of the 110 patients (16.4%) in HBV-ACLF patients without HE, this difference was highly significant ( $P = 0.000$ ). There was no difference between two groups regarding the upper gastrointestinal bleeding before the occurrence of HE during hospitalization period (9.1% vs. 5.5%,  $P = 0.377$ ). We also investigated the use of medications before the occurrence of HE after admission. Among patients with HE, the proportion of patients taking PPI was 89.1%, compared with only 68.2% in ACLF patients without HE. This difference was highly significant ( $P = 0.001$ ). Indications for PPI prescription also were similar in the two groups. The proportion of patients with HE taking oral lactulose before the occurrence of HE was 32.7%, compared with 50.9% in patients without HE, the difference was significant ( $P = 0.027$ ). Two groups were significantly different regarding the use of arginine Hydrochloride (21.8% vs. 10.0%,  $P = 0.039$ ), but there were no significant differences between the two groups regarding use of oral antibiotics, drugs to prevent hepatic coma (3AA, LOLA) and use of intestinal probiotic preparations ( $P > 0.05$ ) (Table 1). Logistic regression was used to examine the combined effects of the variables with HE as the outcome. HE in HBV-ACLF was associated with hyponatremia (odds ratio (OR) = 6.318, 95% Confidence interval (CI) = 2, 803-14.241;  $P = 0.000$ ), PPI use was independently associated with HE (OR = 4.392, CI = 1.604-12.031;  $P = 0.004$ ), and lactulose use had a protective effect (OR = 0.294, CI = 0.136-0.675;  $P = 0.003$ ) (Table 2).

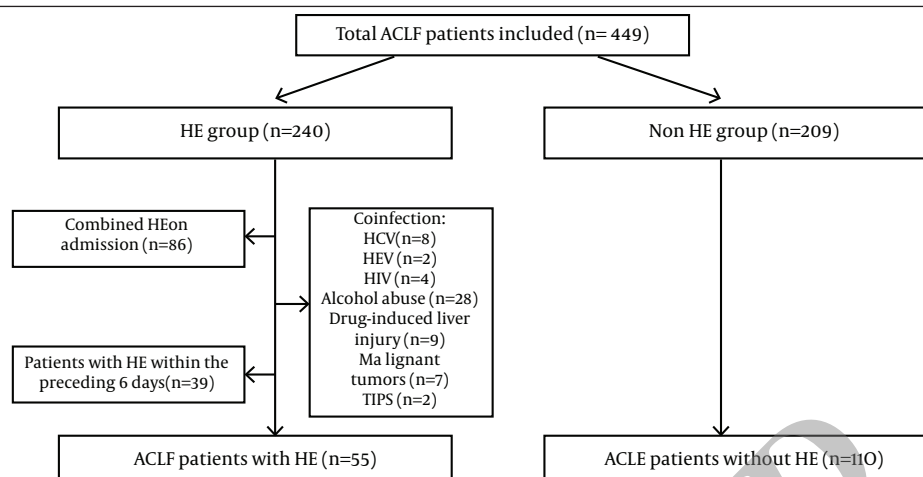


Figure 1. Flow Diagram of the Study Disposition

Table 1. Comparison of Clinical, Biochemical and Virological Characteristics of Patients in Two Groups Using Univariate Analysis<sup>a, b</sup>

	HE (n=55)	Non HE (n=110)	P Value
Age, y	46 (37-55)	43 (36-48)	0.068
Gender			0.230
Men	46	83	
Women	9	27	
MELD Score	25.3 ± 5	24.6 ± 5.9	0.515
Upper gastrointestinal bleeding, %	5 (9.1)	6 (5.5)	0.377
Infection, %	44 (80.0)	68 (61.8)	0.018
Hypokalemia, %	17 (30.9)	20 (18.8)	0.065
Hyponatraemia, %	29 (52.7)	18 (16.4)	0.000
Cirrhosis, %	28 (50.9)	57 (51.8)	0.912
Ascites, %	41 (74.5)	67 (60.9)	0.082
RBC, 10 <sup>12</sup> /L	3.7 ± 0.9	3.8 ± 0.8	0.214
HB, g/L	117.6 ± 24.7	119.0 ± 21.5	0.708
WBC, 10 <sup>9</sup> /L	6.2 ± 3.1	6.2 ± 2.8	0.994
PLT, 10 <sup>9</sup> /L	80.9 ± 45	85.9 ± 47	0.516
Total protein, g/L	63.5 ± 8.4	65.0 ± 8.0	0.141
ALB, g/L	30.8 ± 6.3	31.1 ± 4.9	0.716
ALT, IU/L	548.5 (68-959)	614 (93-1015)	0.483
AST, IU/L	598.1 (107-1065)	518.3 (119-763)	0.737
TB, umol/L	285.8 (175-282)	275.0 (163-363)	0.605
DB, umol/L	201.5 (126-281)	194.0 (112-261)	0.609
GGT, umol/L	88.7 (42-131)	92.2 (48.5-116.5)	0.473
Serum creatinine, umol/L	73 (58-88)	75 (57-84)	0.54
Urea nitrogen, umol/L	4.5 (3-5.4)	5.0 (3.0-5.3)	0.434
PTA, %	29 ± 7	31 ± 7	0.09
AFP, ug/L	111.6 (13-65.6)	172.7 (13-207)	0.005
HBV-DNA, Log <sub>10</sub> IU/L	5.8 (4.2-7.7)	5.4 (3.4-6.8)	0.262
HBe Ag-positive, %	28 (50.9)	53 (48.2)	0.741
oral antibiotics, %	7 (13.7)	9 (8.2)	0.352
Probiotic preparations, %	15 (27.3)	34 (30.9)	0.630
Lactulose use, %	18 (32.7)	56 (50.9)	0.027
Branched chain amino acids, %	16 (29.1)	19 (17.3)	0.080
L-ornithine-L-aspartate, %	13 (23.6)	29 (26.4)	0.705
Arginine hydrochloride, %	12 (21.8)	11 (10)	0.039
PPI use, %	49 (89.1)	70 (63.6)	0.001

<sup>a</sup> Abbreviations: AFP, alpha-fetoprotein; ALT, alanine aminotransferase; AST, aspartate aminotransferase; DB, direct bilirubin; GGT, glutamyltransferase; HB, hemoglobin; MELD, model for end-stage liver disease; PPI, proton pump inhibitor; PTA, prothrombin activity; RBC, Red blood cell count; TB, total bilirubin; WBC, White blood cell count.

<sup>b</sup> Data are presented in Mean ± SD or No. (%).

In our study, 49 patients were prescribed PPIs before HE, but there were only 15 patients who had clear indication for PPIs use; in other patients there were no clear indications for PPI prescription, for example, PPIs were prescribed just for some gastrointestinal symptoms, such as abdominal pain and dyspepsia (Table 3). In addition, we assessed the mortality rates of patients with and without clear indication of PPI. The 3-months mortality of ACLF patients using PPIs reached 37.8% (45.119), compared with only 26.1% (12.46) in ACLF patients not taking PPIs. As shown in Figure 2, there was no significant difference in the overall survival rate between the two groups (95% Confidence interval = 60.6-73.9,  $P = 0.212$ ).

## 5. Discussion

In the current retrospective case - control study, 165 of HBV-ACLF patients were analyzed with the aim of assessing factors associated with the development of HE. Our data supported an association between PPI use and developing HE in patients with ACLF. PPI prophylaxis for gastrointestinal bleeding and variceal or portal hypertension are a common clinical practice. In addition, liver failure patients often have severe gastrointestinal symptoms such as: reflux, nausea, vomiting, and abdominal pain. So, PPIs which are commonly used to suppress the secretion of stomach acid are used to alleviate symptoms of the digestive tract. The adverse consequences of PPI use have been increasingly reported, though it has an overall good safety profile. Gastric acid has the capability of killing exogenous acid sensitive bacteria introduced into the stomach, usually within 15 minutes at the  $\text{pH} < 4$ . Any factors which increase the gastric pH above four may cause a state of hypochlorhydria and potentially increases the susceptibility to various microbes, including enteropathogenic forms with the potential to colonize, invade or inflame the intestine, allowing at least 50% of the ingested bacteria to survive the gastric trap (23). Animal model studies have shown that using gastric acid inhibitors can cause bacterial translocation in a way that enteric microbes will be able to escape the local gut defenses and epithelial barrier (24). It should be noted that the studies about the effect of PPIs on bacterial translocation were limited to animal studies. Recently published studies have suggested that PPIs could increase the risk of SBP in patients with cirrhosis (11, 12, 16, 25, 26). The use of PPIs increases the gastric pH, bacterial translocation, facilitates the growth of the gut microflora, and alters various immunomodulatory and anti-inflammatory effects (12, 27). Therefore, the attenuation of immune system provides a plausible mechanism to explain why patients consuming PPIs might be at increased risk of SBP. For *Salmonella* and *C. jejuni* strains, the relatively few published studies report a significant association of enteric infections with PPI use (10, 28-31), and this situation was similar to antihistamine receptor antagonist use (32). Besides, it was reported that bacterial pneumonias (33-35) and hip fracture (36, 37) might be more common in patients on PPIs.

**Table 2.** Logistic Regression (by Forward LR) Was Used to Examine the Combined Effects of the Variables (HE was designated as the Outcome)

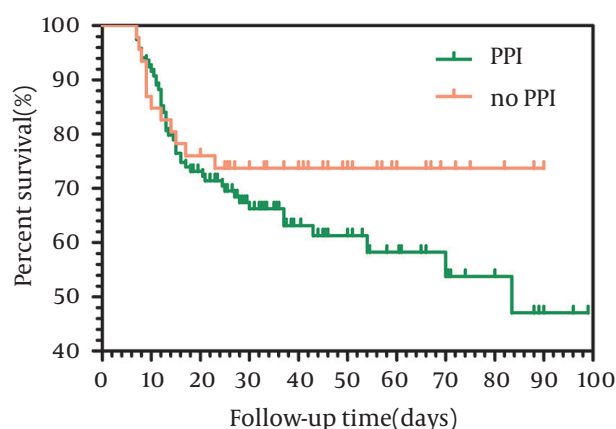
	Odds Ratio	95% Confidence Interval	P Value
Hyponatraemia	6.318	2.803-14.241	0.000
Lactulose use	0.303	0.136-0.675	0.003
PPI use	4.392	1.604-12.031	0.004

**Table 3.** Detailed Regimens of Proton Pump Inhibitor <sup>a, b</sup>

Indication for PPI Therapy	HE Group PPI Users (n = 49)	Non-HE Group PPI Users (n = 70)	P Value
GERD	1 (2)	2 (2.9)	1.000
Peptic ulcer	2 (4.1)	6 (8.6)	0.555
Prophylactic use of PPI for the portal hypertension bleeding	8 (16.3)	18 (25.7)	0.223
Upper gastrointestinal bleeding	4 (8.2)	4 (5.7)	0.600
No documented indication	34 (69.4)	40 (57.1)	0.175

<sup>a</sup> Abbreviations: GERD, Gastroesophageal reflux disease; PPI, proton pump inhibitor.

<sup>b</sup> Data are presented in No. (%).



**Figure 2.** Kaplan-Meier Survival of the Two Groups of Patients With and Without Indication of PPI Use Who Were Followed for 90 Days

However, there were few studies concerning the association of PPI therapy with HE in patients with ACLF. Increased gastric PH, as a consequence of PPIs, small intestinal bacterial overgrowth (SIBO) (8), and abnormal intestinal motility (14) may play an important role in increasing the growth of pathogenic bacteria and increased absorption of gut toxins in the portal system, which may lead to an increased incidence of HE especially in ACLF.

In our study, logistic regression analysis showed that PPI use was independently associated with HE (OR = 4.392, CI = 1.604–12.031; P = 0.004), which was attributed to increased ammonia as a key factor in the pathogenesis of HE. Most therapies for HE focus on treating episodes as they occur and are directed at reducing the nitrogenous load in the gut, an approach that was consistent with the hypothesis that this disorder results from the systemic accumulation of gut-derived neurotoxins, especially ammonia, in patients with impaired liver function. It is also previously shown that oral antibiotics and lactulose can prevent HE (7, 38). In addition, PPIs suppress gastric acid secretion and decrease the severity of symptoms of indigestion compared with patients without PPI (39). So, PPIs should be more cautiously used in patients with ACLF. PPIs have provided benefits in the management of gastrointestinal diseases, including gastroesophageal reflux disease and peptic ulcer disease, but unfortunately, the unnecessary prescription of PPIs has become an important problem, which increases economic costs in daily clinical practice (40). Meanwhile, a clinical trial demonstrated that prophylactic use of PPIs did not improve the portal hypertension-related bleeding in patients with cirrhosis (41). Besides, patients with ACLF have a high prevalence of gastrointestinal symptoms, and PPIs may alter gastric emptying, thus aggravating the digestive tract symptoms. A recent retrospective study by Bajaj et al. (12) showed that 47% of cirrhotic patients receiving PPI had no documented indication for PPI treatment. In our study, 69.4 % (n = 34) of these patients had inadequate indications for PPI treatment in the HE group, as well as 57.1% of patients (n = 40) in non-HE group. This finding was consistent with previous reports (39). Therefore, it might be beneficial that a valid indication for PPI use would be applied in daily clinical practice. We must point out the limitations of our study, the first of which is that this was a retrospective analysis of HE. The diagnosis of HE was based on the clinical criteria. Thus, it was difficult to assess patients who had a minimal degree of HE or HE with grade less than II, because the related symptoms can be easily ignored. So these types of patients failed to enter into our study. In addition, patients' use of PPIs before the admission was not specified in the medical records. Another limitation of our study was that the collection of the information related to plasma ammonia levels was not complete. It was better if ammonia levels at the time of admission and the occurrence of HE were recorded, and entered into the univariate and multivariate analyses. This might have made our results more convincing. In conclusion, the occurrence of HE was related to hyponatremia, and PPI use in patients with HBV-ACLF. Lactulose was effective in the prevention of HE in patients. Prospective studies are needed to determine whether PPI avoidance can reduce the incidence of HE and improve patients' outcomes.

## Acknowledgements

We express our special thanks to the second affiliated hospital of Chongqing Medical University staff and also all the participating patients for their help and support.

## Authors' Contribution

Study concept and design: Peng Hu; Analysis and interpretation of data: Zhao-Ni Lin, Yong-Qing Zuo; Drafting the manuscript: Zhao-Ni Lin, Peng Hu; Statistical analysis: Zhao-Ni Lin.

## Financial Disclosure

We declare that we have no conflicts of interest.

## Funding/Support

This work was supported by the National Natural Science Foundation of China [No.30972584, No.81171561 and No.30930082], National Science and Technology major Project of China [No. 2012ZX10002-007], the National High Technology Research and Development Program of China (863 Program) [No. 2011AA020111].

## References

- Jalan R, Gines P, Olson JC, Mookerjee RP, Moreau R, Garcia-Tsao G, et al. Acute-on chronic liver failure. *J Hepatol*. 2012;**57**(6):1336–48.
- Olson JC, Kamath PS. Acute-on-chronic liver failure: concept, natural history, and prognosis. *Curr Opin Crit Care*. 2011;**17**(2):165–9.
- Ong JP, Aggarwal A, Krieger D, Easley KA, Karafa MT, Van Lente F, et al. Correlation between ammonia levels and the severity of hepatic encephalopathy. *Am J Med*. 2003;**114**(3):188–93.
- Mas A. Hepatic encephalopathy: from pathophysiology to treatment. *Digestion*. 2006;**73** Suppl 1:86–93.
- Bauer TM, Schwacha H, Steinbruckner B, Brinkmann FE, Ditzen AK, Aponte JJ, et al. Small intestinal bacterial overgrowth in human cirrhosis is associated with systemic endotoxemia. *Am J Gastroenterol*. 2002;**97**(9):2364–70.
- Luo M, Li L, Lu CZ, Cao WK. Clinical efficacy and safety of lactulose for minimal hepatic encephalopathy: a meta-analysis. *Eur J Gastroenterol Hepatol*. 2011;**23**(12):1250–7.
- Bass NM, Mullen KD, Sanyal A, Poordad F, Neff G, Leevy CB, et al. Rifaximin treatment in hepatic encephalopathy. *N Engl J Med*. 2010;**362**(12):1071–81.
- Lewis SJ, Franco S, Young G, O'Keefe SJ. Altered bowel function and duodenal bacterial overgrowth in patients treated with omeprazole. *Aliment Pharmacol Ther*. 1996;**10**(4):557–61.
- Kanno T, Matsuki T, Oka M, Utsunomiya H, Inada K, Magari H, et al. Gastric acid reduction leads to an alteration in lower intestinal microflora. *Biochem Biophys Res Commun*. 2009;**381**(4):666–70.
- Janarthanan S, Ditah I, Adler DG, Ehrinpreis MN. Clostridium difficile-associated diarrhea and proton pump inhibitor therapy: a meta-analysis. *Am J Gastroenterol*. 2012;**107**(7):1001–10.
- Siple JF, Morey JM, Gutman TE, Weinberg KL, Collins PD. Proton pump inhibitor use and association with spontaneous bacterial peritonitis in patients with cirrhosis and ascites. *Ann Pharmacother*. 2012;**46**(10):1413–8.
- Bajaj JS, Zadornova Y, Heuman DM, Hafeezullah M, Hoffmann RG, Sanyal AJ, et al. Association of proton pump inhibitor therapy with spontaneous bacterial peritonitis in cirrhotic patients with ascites. *Am J Gastroenterol*. 2009;**104**(5):1130–4.
- Blei AT, Cordoba J, Practice Parameters Committee of the American College of G. Hepatic Encephalopathy. *Am J Gastroenterol*.

- 2001;**96**(7):1968-76.
14. Sanaka M, Yamamoto T, Kuyama Y. Effects of proton pump inhibitors on gastric emptying: a systematic review. *Dig Dis Sci*. 2010;**55**(9):2431-40.
  15. Huang K, Hu JH, Wang HF, He WP, Chen J, Duan XZ, et al. Survival and prognostic factors in hepatitis B virus-related acute-on-chronic liver failure. *World J Gastroenterol*. 2011;**17**(29):3448-52.
  16. Goel GA, Deshpande A, Lopez R, Hall GS, van Duin D, Carey WD. Increased rate of spontaneous bacterial peritonitis among cirrhotic patients receiving pharmacologic acid suppression. *Clin Gastroenterol Hepatol*. 2012;**10**(4):422-7.
  17. Li XM, Ma L, Yang YB, Shi ZJ, Zhou SS. Analyses of prognostic indices of chronic liver failure caused by hepatitis virus. *World J Gastroenterol*. 2005;**11**(18):2841-3.
  18. Liu Q, Liu Z, Wang T, Wang Q, Shi X, Dao W. Characteristics of acute and sub-acute liver failure in China: nomination, classification and interval. *J Gastroenterol Hepatol*. 2007;**22**(12):2101-6.
  19. Rohss K, Lind T, Wilder-Smith C. Esomeprazole 40 mg provides more effective intragastric acid control than lansoprazole 30 mg, omeprazole 20 mg, pantoprazole 40 mg and rabeprazole 20 mg in patients with gastro-oesophageal reflux symptoms. *Eur J Clin Pharmacol*. 2004;**60**(8):531-9.
  20. Gan KH, Geus WP, Lamers CB, Heijerman HG. Effect of omeprazole 40 mg once daily on intraduodenal and intragastric pH in H. pylori-negative healthy subjects. *Dig Dis Sci*. 1997;**42**(11):2304-9.
  21. Metz DC, Pratha V, Martin P, Paul J, Maton PN, Lew E, et al. Oral and intravenous dosage forms of pantoprazole are equivalent in their ability to suppress gastric acid secretion in patients with gastroesophageal reflux disease. *Am J Gastroenterol*. 2000;**95**(3):626-33.
  22. Sarin SK, Kumar A, Almeida JA, Chawla YK, Fan ST, Garg H, et al. Acute-on-chronic liver failure: consensus recommendations of the Asian Pacific Association for the study of the liver (APASL). *Hepatol Int*. 2009;**3**(1):269-82.
  23. Tennant SM, Hartland EL, Phumoonna T, Lyras D, Rood JJ, Robins-Browne RM, et al. Influence of gastric acid on susceptibility to infection with ingested bacterial pathogens. *Infect Immun*. 2008;**76**(2):639-45.
  24. Dinsmore JE, Jackson RJ, Smith SD. The protective role of gastric acidity in neonatal bacterial translocation. *J Pediatr Surg*. 1997;**32**(7):1014-6.
  25. Campbell MS, Obstein K, Reddy KR, Yang YX. Association between proton pump inhibitor use and spontaneous bacterial peritonitis. *Dig Dis Sci*. 2008;**53**(2):394-8.
  26. Choi EJ, Lee HJ, Kim KO, Lee SH, Eun JR, Jang BI, et al. Association between acid suppressive therapy and spontaneous bacterial peritonitis in cirrhotic patients with ascites. *Scand J Gastroenterol*. 2011;**46**(5):616-20.
  27. Zedtwitz-Liebenstein K, Wenisch C, Patruta S, Parschalk B, Daxbock F, Graninger W. Omeprazole treatment diminishes intra- and extracellular neutrophil reactive oxygen production and bactericidal activity. *Crit Care Med*. 2002;**30**(5):1118-22.
  28. Deshpande A, Pant C, Pasupuleti V, Rolston DD, Jain A, Deshpande N, et al. Association between proton pump inhibitor therapy and Clostridium difficile infection in a meta-analysis. *Clin Gastroenterol Hepatol*. 2012;**10**(3):225-33.
  29. Kwok CS, Arthur AK, Anibueze CI, Singh S, Cavallazzi R, Loke YK. Risk of Clostridium difficile infection with acid suppressing drugs and antibiotics: meta-analysis. *Am J Gastroenterol*. 2012;**107**(7):1011-9.
  30. Bavishi C, Dupont HL. Systematic review: the use of proton pump inhibitors and increased susceptibility to enteric infection. *Aliment Pharmacol Ther*. 2011;**34**(11-12):1269-81.
  31. Tleyjeh IM, Bin Abdulhak AA, Riaz M, Alasmari FA, Garbati MA, AlGhamdi M, et al. Association between proton pump inhibitor therapy and clostridium difficile infection: a contemporary systematic review and meta-analysis. *PLoS One*. 2012;**7**(12):ee50836
  32. Tleyjeh IM, Abdulhak AB, Riaz M, Garbati MA, Al-Tannir M, Alasmari FA, et al. The association between histamine 2 receptor antagonist use and Clostridium difficile infection: a systematic review and meta-analysis. *PLoS One*. 2013;**8**(3):ee56498
  33. Herzig SJ, Howell MD, Ngo LH, Marcantonio ER. Acid-suppressive medication use and the risk for hospital-acquired pneumonia. *JAMA*. 2009;**301**(20):2120-8.
  34. Laheij RJ, Sturkenboom MC, Hassing RJ, Dieleman J, Stricker BH, Jansen JB. Risk of community-acquired pneumonia and use of gastric acid-suppressive drugs. *JAMA*. 2004;**292**(16):1955-60.
  35. Dial S, Delaney JA, Barkun AN, Suissa S. Use of gastric acid-suppressive agents and the risk of community-acquired Clostridium difficile-associated disease. *JAMA*. 2005;**294**(23):2989-95.
  36. Yang YX, Lewis JD, Epstein S, Metz DC. Long-term proton pump inhibitor therapy and risk of hip fracture. *JAMA*. 2006;**296**(24):2947-53.
  37. Targownik LE, Lix LM, Metge CJ, Prior HJ, Leung S, Leslie WD. Use of proton pump inhibitors and risk of osteoporosis-related fractures. *CMAJ*. 2008;**179**(4):319-26.
  38. Mullen KD, Prakash RK. *Hepatic encephalopathy*: Springer; 2012.
  39. Kalaitzakis E, Bjornsson E. Inadequate use of proton-pump inhibitors in patients with liver cirrhosis. *Eur J Gastroenterol Hepatol*. 2008;**20**(6):512-8.
  40. Delate T, Mager DE, Sheth J, Motheral BR. Clinical and financial outcomes associated with a proton pump inhibitor prior-authorization program in a Medicaid population. *Am J Manag Care*. 2005;**11**(1):29-36.
  41. Garcia-Saenz-de-Sicilia M, Sanchez-Avila F, Chavez-Tapia NC, Lopez-Arce G, Garcia-Osogobio S, Ruiz-Cordero R, et al. PPIs are not associated with a lower incidence of portal-hypertension-related bleeding in cirrhosis. *World J Gastroenterol*. 2010;**16**(46):5869-73.



# SID



سرویس های  
ویژه



سرویس ترجمه  
تخصصی



کارگاه های  
آموزشی



بلاگ  
مرکز اطلاعات علمی



عضویت در  
خبرنامه



فیلم های  
آموزشی

## کارگاه های آموزشی مرکز اطلاعات علمی جهاد دانشگاهی



مباحث پیشرفته یادگیری عمیق؛  
شبکه های توجه گرافی  
(Graph Attention Networks)



کارگاه آنلاین آموزش استفاده از  
وب آوساینس



کارگاه آنلاین مقاله روزمره انگلیسی