

# SID



سرویس های ویژه



سرویس ترجمه تخصصی



کارگاه های آموزشی



بلاگ مرکز اطلاعات علمی



عضویت در خبرنامه



فیلم های آموزشی

## کارگاه های آموزشی مرکز اطلاعات علمی جهاد دانشگاهی



مباحث پیشرفته یادگیری عمیق؛ شبکه های توجه گرافی (GAN)

مباحث پیشرفته یادگیری عمیق؛  
شبکه های توجه گرافی  
(Graph Attention Networks)



آموزش استفاده از وب آو ساینس

کارگاه آنلاین آموزش استفاده از  
وب آو ساینس



کارگاه آنلاین مقاله روزمره انگلیسی

## The Correlation between CYP450 Ile462Val Polymorphism and Prostate Cancer in a Group of Iranian Men

Maryam Seydali Route\*, Zahra Tahmasebi Fard\*\*

\*Department of Genetics, Ahar Branch, Islamic Azad University, Ahar, Iran

\*\*Department of Biology, Roudehen Branch, Islamic Azad University, Roudehen, Iran

### Abstract

**Background:** Cytochrome P450 plays an important role in pharmaceutical metabolism, steroidal hormones and procarcinogens. CYP1A1 is an enzyme, which is very active in the formation of reactive mediators or injurious agents for DNA. The aim of this study is to evaluate the prevalence rate of genetic polymorphism RS 1048943 gene CYP1A1 in men diagnosed with prostate cancer compared to a control group of healthy men.

**Methods:** This case-control study analysed blood samples from 79 patients with prostate cancer as well as 79 healthy men. Genomic DNA was extracted by the salting out method. After selecting the suitable primers from the papers, the samples were amplified for the considered segment and genotypes of the participants were determined by PCR-RFLP.

**Results:** Individuals with prostate cancer had the following genotypes: AA (31.64%), GG (59.49%) and AG/GA (8.86%) compared to the control group that had genotypes AA (55.69%), GG (29.11%) and AG/GA (15.18%). According to the Hardy-Weinberg equilibrium, the frequency of allele A was 36.7% in the cancer group and 63.29% in the control group. The frequency of allele G was 63.92% in the cancer group and 36.70% in the control group. There were meaningful differences in the frequencies of homozygotes GG ( $P<0.001$ ) and AA ( $P=0.002$ ) between patients and controls.

**Conclusion:** Polymorphism RS 1048943 in gene CYP1A1 is related to the risk of developing prostate cancer and it is likely one of the major factors in its occurrence.

**Keywords:** Polymorphism RS 1048943, Cytochrome 1A1 (CYP1A1), Prostate cancer

#### Corresponding Author:

Zahra Tahmasebi Fard, PhD  
Assistant Professor of Cellular  
and Molecular Biology, Islamic  
Azad University, Roudehen  
Branch, Roudehen, Iran  
Tel: 021-76501812, 76505015  
Email: ztahmasebi@riau.ac.ir  
ztahmasebifard@yahoo.com

### Introduction

Prostate cancer is the most common cancer in males.<sup>1</sup> Some studies have shown that prostate cancer is not common in Iran in comparison to the US and Europe,

but it has increased in recent years.<sup>2</sup>

Androgens are male sexual hormones produced by the testis and adrenal glands which have a vital role in the reproductive system of males and in their sexual behavior.<sup>3</sup>

Androgens are essential for development, function and maintenance of the prostate. In addition to androgens, estrogens and female sexual hormones have an important role in the male reproductive tract through special receptors of estrogen.<sup>4</sup> The estrogen hormone is essential for either stimulating DNA synthesis or inducing the morphology of metaplastic epithelial in the prostates of humans and mice.<sup>5</sup> It appears that the development of the prostate is particularly sensitive to the amount of estrogen available. In the whelps of mice that are not exposed to estrogen, it results in the inhibition of the growth of the prostate and its function.<sup>6</sup>

Cytochrome P450 (CYP) is a large family of hemoproteins (proteins with Fe),<sup>7</sup> of which more than 15 various enzymes have been identified in humans.<sup>8</sup> These enzymes are facilitators and catalysers for different reactions. They are considered to be elements of the electron transportation system in the detoxification of the complex endoplasmic network. Their important role is to remove the toxic materials in the cells.<sup>9</sup> These proteins are mono-oxygenases, which have a vital role in many reactions, including the metabolism of medicine and the synthesis of cholesterol, steroids and other lipids.<sup>10</sup> Studies have demonstrated that these enzymes play a role in other cellular functions such as the metabolism of icozanoids, the biosynthesis of bile acids and vitamin D3, the biological destruction of amines, and the hydroxylation of retinoic acid.<sup>11,12</sup>

One of the members of this family is the CYP1A1 enzyme, which is involved in the activation of polycyclic aromatic hydrocarbons (PAH) such as benzopyrene. Benzopyrene is considered an important carcinogen<sup>8</sup> because many products of the reactions are formed by hydrolysis of the aromatic cycle,<sup>13</sup> which has a mutagenic feature, and it initiates the characteristic of carcinogenesis by binding to DNA<sup>14</sup>. In addition, this enzyme has key role in the oxidative metabolism of estrogen.<sup>15</sup> The stages of the metabolism of estrogen include converting the estrogens to various metabolites of catechol estrogen (2 and 4 hydroxy estrogen), which is performed by enzymes of CYP1A2, CYP1A1

and CYP1B1.<sup>16, 17</sup> CYP1A1 undertakes the first stage of oxidation of estrogen to 2-OH hydroxylation.<sup>18</sup> It results in the development of tumors in rodents<sup>15</sup> by hydroxylating two major estrogens of E1 and E2 in the position of C2.<sup>12</sup>

Gene CYP1A1 is located at position 15q22-q24. This gene contains seven exons and six introns that are 5810 bp in length.<sup>15</sup> When the open proofreading framework (ORF) is initiated from the second exon, a protein with 512 amino acids is encoded.<sup>19</sup> CYP1A1 mRNA is expressed in most human tissue such as the lungs, esophagus, stomach, small intestine, colon, prostate and breasts.<sup>20,21</sup>

Several polymorphic regions have been reported in the gene CYP1A1 of which the most common is the displacement of amino acids in position 462 in the CYP1A1\*2 allele. This condition is related to an increased risk of developing various cancers.<sup>23</sup> Due to the important role of this gene in the carcinogenesis of different cancers, carcinogens of prostate cancer may occur by variation in the geno-toxicity balance and hormones.<sup>24</sup> The relationship between this polymorphism and cancer of the prostate in Iranian men has been evaluated in this study.

## Materials and Methods

This case-control study enrolled a number of Iranian men diagnosed with primary adenocarcinoma of the prostate as the case group. Males from the case group underwent digital rectal examinations, serum PSA levels, fine needle aspiration biopsy of the prostate, radical prostatectomies and confirmation of the histopathology report. The control group was selected from healthy men who did not use any medications and had no familial background or acquired cancers, including cancer of the prostate. This study was performed by compliance with all measures and criteria following approval from the Ethics Committee. Written consent was obtained from each participant.

## Results

The cancer patients were selected from an age

group of 43–70 years, with an average age of 61.34. Control group participants were selected from the same age range, with an average of 54.16 years. Among patients, 47 (59.49%) were in stage I, 28 (35.44%) in stage II, 3 (3.79%) in stage III, and one person (1.26%) was stage IV adenocarcinoma of the prostate.

### Polymerase chain reaction (PCR)

Approximately 5–7 ml of blood was collected from all participants, mixed with EDTA and kept at  $-20^{\circ}\text{C}$ . We used the salting out method<sup>25</sup> to extract available DNA from the white blood cells. Their concentrations were determined by a spectrophotometer. Specific primers were used for amplifying the segment that contained the Ile462Val polymorphism. The following primer sequences were used for forward: 5'CTGTCTC-CCTCTGGTTACAGGAAGC3' and reverse: 5'-TTCCACCCGTTGCAGCAGGATAGCC3'.<sup>26,27</sup>

Water (10  $\mu\text{l}$ ) and a commercial master mix (10  $\mu\text{l}$ ; Master Mix Amplicon) of 2X were added to each 0.2 ml microtube. This Master Mix Amplicon contained  $\text{MgCl}_2$  (1.5 mM), buffer, Taq enzyme, dNTP, and other necessary materials for the test. We added 1  $\mu\text{l}$  of each primer and 50 ng (1  $\mu\text{l}$ ) of genomic DNA from each participant to the mixture. After a rapid, short centrifugation period, the samples were placed in the Thermal cycler system. The system proliferated the 204 bp segment from the CYP1A1 gene through the program at  $95^{\circ}\text{C}$  for 7 min in one cycle;  $95^{\circ}\text{C}$  for 3 min,  $64^{\circ}\text{C}$  for 40 s,  $72^{\circ}\text{C}$  for 1 min for 37 cycles; and a final cycle of  $72^{\circ}\text{C}$  for 7 min. The proliferated products were electrophoresed on a 1.5% agarose gel associated with DNA Safe 6x along with a 100 bp size marker (Fermentase) at a fixed voltage of 100 v for 30-40 min, with subsequent observation of the bands under consideration.

### Genotypic determination

The polymerase chain reaction (PCR) product with the 204 bp band was incubated with the restrictive enzyme of BsrDI for 16-18 h at a temperature of  $37^{\circ}\text{C}$ . The cut-off site of the

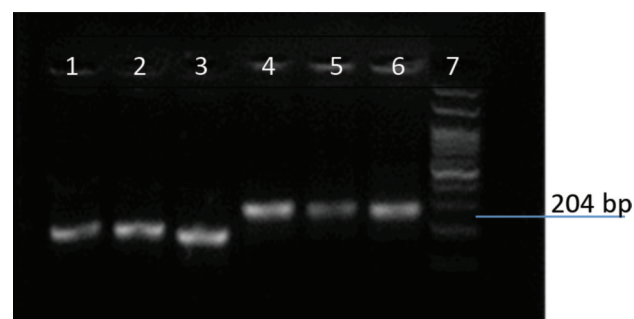
enzyme will be complete if the proliferated segment of the CYP1A1 gene is in the polymorphism region that contains adenine, and it can cut the proliferated segment into 150 bp and 54 bp (genotype AA). However the segment does not cut if there is guanine instead of adenine (A $\rightarrow$ G), and a 204 bp segment (genotype GG) will appear on the gel. The heterozygote genotype (AG/GA) is identified by 204 bp, 150 bp and 54 bp bands. In order to evaluate the changes or lack of changes in the cut-off sites of the enzyme, the digested products along with loading buffer have been electrophoresed on a 2% agarose gel at a voltage of 100 v for 40 min (Figure 1).

### Statistical analysis

The frequency of genotypes was determined by counting and calculating their percent in the control and cancer groups. Next, the frequency of alleles was obtained in both groups according to the Hardy–Weinberg equilibrium. Genotypes in the two groups were compared by the chi-square test and SPSS21 software. The summary of the results is listed in Table 1.

### Discussion

Identifying the pathophysiology of prostate cancer and understanding its causal factors is difficult and troublesome. The evidence has indicated that both environmental and genetic factors are involved in producing prostate cancer.<sup>28,29</sup> The major risk factors for this cancer include smoking, diet, obesity, increased age, familial background and genetic factors. Cancer of the prostate is rare before the age of 45, but its



**Figure 1.** The results of the digestion samples where wells 1-3 represent samples of the AA genotype; wells 4-6 are samples of the GG genotype and well 7 is the 100 bp ladder.

**Table 1.** The *P*-value, odds ratio and 95% CI for the genotypes determined in the case and control groups.

Genotype	Prostate cancer	Control	<i>P</i> -value	Odds ratio	95% CI
AA	25 (31.65%)	44 (55.70%)	0.002	0.37	0.19-0.7
GG	47 (59.49%)	23 (29.11%)	0.000	3.58	1.85-6.94
AG/GA	7 (8.86%)	12 (15.19%)	0.164	0.54	0.2-1.45

prevalence increases in older men.<sup>30</sup> The men who have first-degree relatives with prostate cancer have a twofold risk of developing cancer compared to those with no familial history;<sup>31</sup> people with two first-degree relatives with cancer of the prostate have a five-fold risk.<sup>32</sup>

Estrogen is considered one of the hormonal risk factors for prostate cancer. The balance between androgens and estrogen changes with increased age, where the level of androgen in plasma decreases and the level of estrogen is relatively stable.<sup>33</sup> Two genes of the estrogen receptor (ER) encoding two proteins, ER  $\beta$  and ER  $\alpha$  that have various functions, are found in the prostate. This shows that estrogen likely acts on the prostate directly. As the rate of ER expression in the healthy tissue of the prostate is lower than the tissue of breast,<sup>34</sup> its level clearly decreases in the tissue of the prostate with cancer. It reaches its lowest level in patients who are resistant to treatment.<sup>35</sup>

Prostate cancer strongly depends on the metabolism of hormones; therefore, it is reasonable to consider that the genetic variations in active genes can impact hormones and may affect the risk of developing cancer.

CYP1A1 is one of the genes involved in the metabolism of estrogen, which undertakes the first stage of oxidation of estrogen by hydroxylation of 2-OH.<sup>17</sup> Generally, CYP1A1 is expressed in the epithelial tissues, and it has a key role in the metabolism of endogenous and exogenous substrates of carcinogenic material. This enzyme is very active in forming reactive mediators, and it not only damages DNA, but also initiates or precipitates carcinogenesis.<sup>13</sup>

The most important polymorphisms of CYP1A1 includes M1 in which transposition of T to C occurs in nucleotide 3801 in the non-

coding 3' region and M2 in which transposition of A to G occurs in nucleotide 2455 (to change isoleucine to valine in codon 462) or the same polymorphism as rs1048943 (462ile > val).<sup>36-39</sup>

In this study we evaluated polymorphism M2 or RS1048943 in men with prostate cancer. The results demonstrated a meaningful correlation between this polymorphism and cancer of the prostate in Iranian men. Our results agreed with other studies performed by Murata,<sup>40</sup> Chang,<sup>41</sup> Suzuki,<sup>42</sup> Aktas,<sup>43</sup> Yang,<sup>44</sup> Mittal,<sup>45</sup> and Li<sup>46</sup>.

## Conclusion

Our results indicated that the G allele with a frequency of 63.92% represented the highest prevalence in prostate cancer patients compared to the A allele with a frequency of 36.07%.

The proportion of calculated chance for genotype GG was 3.58, which showed the significant effect of this genotype in producing cancer. However, genotype AA with a proportion of chance of 0.37 indicated that this genotype did not affect production of prostate cancer.

This study has been undertaken for the first time in Iranian men diagnosed with cancer of the prostate. In the future, it is hoped that a variety of genetic polymorphisms can be determined which may have an etiologic role in prostate cancer.

## Conflict of Interest

No conflict of interest is declared.

## References

1. Karypidis AH, Olsson M, Andersson SO, Rane A, Ekström L. Deletion polymorphism of the UGT2B17 gene is associated with increased risk for prostate cancer and correlated to gene expression in the prostate. *Pharmacogenomics J.* 2008;8(2):147-51.
2. Sadjadi A, Nooraie M, Ghorbani A, Alimohammadian M, Zahedi M-J, Darvish-Moghadam S, et al. The incidence of prostate cancer in Iran: results of a

- population-based cancer registry. *Arch Iran Med.* 2007;10(4):481-5.
3. Ficarra V, Novara G, Zattoni F. The role of the prostate cancer antigen 3 (PCA3) test for the diagnosis of prostate cancer in the era of opportunistic prostate-specific antigen screening. *Eur Urol.* 2010;58(4):482-4; discussion 484-5.
  4. Thompson IM, Pauler DK, Goodman PJ, Tangen CM, Lucia MS, Parnes HL, et al. Prevalence of prostate cancer among men with a prostate-specific antigen level < or =4.0 ng per milliliter. *N Engl J Med.* 2004;350(22):2239-46.
  5. Nevalainen MT, Härkönen PL, Valve EM, Ping W, Nurmi M, Martikainen PM. Hormone regulation of human prostate in organ culture. *Cancer Res.* 1993;53(21):5199-207.
  6. Pylkkänen L, Santti R, Newbold R, McLachlan JA. Regional differences in the prostate of the neonatally estrogenized mouse. *Prostate.* 1991;18(2):117-29.
  7. Shoun H, Tanimoto T. Denitrification by the fungus *Fusarium oxysporum* and involvement of cytochrome P-450 in the respiratory nitrite reduction. *J Biol Chem.* 1991;266(17):11078-82.
  8. Guengerich FP, Shimada T. Oxidation of toxic and carcinogenic chemicals by human cytochrome P-450 enzymes. *Chem Res Toxicol.* 1991;4(4):391-407.
  9. De Vivo I, Hankinson SE, Li L, Colditz GA, Hunter DJ. Association of CYP1B1 polymorphisms and breast cancer risk. *Cancer Epidemiol Biomarkers Prev.* 2002;11(5):489-92.
  10. Tang YM1, Wo YY, Stewart J, Hawkins AL, Griffin CA, Sutter TR, et al. Isolation and characterization of the human cytochrome P450 CYP1B1 gene. *J Biol Chem.* 1996;271(45):28324-30.
  11. Nebert DW, Dalton TP. The role of cytochrome P450 enzymes in endogenous signaling pathways and environmental carcinogenesis. *Nat Rev Cancer.* 2006;6(12):947-60.
  12. Nebert DW, Russell DW. Clinical importance of the cytochromes P450. *Lancet.* 2002;360(9340):1155-62.
  13. Androustopoulos VP, Tsatsakis AM, Spandidos DA. Cytochrome P450 CYP1A1: wider roles in cancer progression and prevention. *BMC Cancer.* 2009;9:187.
  14. Shimada T, Yun CH, Yamazaki H, Gautier JC, Beaune PH, Guengerich FP. Characterization of human lung microsomal cytochrome P450 1A1 and its role in oxidation of chemical carcinogens. *Mol Pharmacol.* 1992;41(5):856-64.
  15. Kawajiri K, Watanabe J, Gotoh O, Tagashira Y, Sogawa K, Fujii-Kuriyama Y. Structure and drug inducibility of the human cytochrome P-450c gene. *Eur J Biochem.* 1986;159(2):219-25.
  16. Shimada T, Fujii-Kuriyama Y. Metabolic activation of polycyclic aromatic hydrocarbons to carcinogens by cytochromes P450 1A1 and 1B1. *Cancer Sci.* 2004;95(1):1-6.
  17. Spink DC, Eugster HP, Lincoln DW 2nd, Schuetz JD, Schuetz EG, Johnson JA, et al. 17 beta-estradiol hydroxylation catalyzed by human cytochrome P450 1A1: a comparison of the activities induced by 2,3,7,8-tetrachlorodibenzo-p-dioxin in MCF-7 cells with those from heterologous expression of the cDNA. *Arch Biochem Biophys.* 1992;293(2):342-8.
  18. Rodriguez-Antona C, Gomez A, Karlgren M, Sim SC, Ingelman-Sundberg M. Molecular genetics and epigenetics of the cytochrome P450 gene family and its relevance for cancer risk and treatment. *Hum Genet.* 2010; 127(1):1-17.
  19. Parl, F.F. Biomedical and Health Research. In: Parl, F.F, editor. Estrogens, Estrogen Receptor and Breast Cancer. Amsterdam: IOS Press; January 2000. Vol 36, p.36-38.
  20. Shimada T, Hayes CL, Yamazaki H, Amin S, Hecht SS, Guengerich FP, et al. Activation of chemically diverse procarcinogens by human cytochrome P-450 1B1. *Cancer Res.* 1996; 56:2979-84.
  21. Omiecinski CJ, Redlich CA, Costa P. Induction and developmental expression of cytochrome P450IA1 messenger RNA in rat and human tissues: detection by the polymerase chain reaction. *Cancer Res.* 1990; 50(14):4315-21.
  22. Spurr NK, Gough AC, Stevenson K, Wolf CR. Msp-1 polymorphism detected with a cDNA probe for the P-450 I family on chromosome 15. *Nucleic Acids Res.* 1987;15(14):5901.
  23. El-Rayes BF, Ali S, Heilbrun LK, Lababidi S, Bouwman D, Visscher D, et al. Cytochrome p450 and glutathione transferase expression in human breast cancer. *Clin Cancer Res.* 2003;9(5):1705-9.
  24. Hildebrandt AG, Schwarz D, Krusekopf S, Kleeberg U, Roots I. Recalling P446. P4501A1 (CYP1A1) opting for clinical application. *Drug Metab Rev.* 2007;39(2-3):323-41.
  25. Noguera NI, Tallano CE, Bragós IM, Milani AC. Modified salting-out method for DNA isolation from newborn cord blood nucleated cells. *J Clin Lab Anal.* 2000;14(6):280-3.
  26. Li Y, Millikan RC, Bell DA, Cui L, Tse CK, Newman B, et al. Cigarette smoking, cytochrome P4501A1 polymorphisms, and breast cancer among African-American and white women. *Breast Cancer Res.* 2004;6(4):R460-73.
  27. Feldman DN, Feldman JG, Greenblatt R, Anastos K, Pearce L, Cohen M, et al. CYP1A1 genotype modifies the impact of smoking on effectiveness of HAART among women. *AIDS Educ Prev.* 2009;21(3 Suppl):81-93.
  28. Gao JP, Huang YD, Yang GZ, Yang YQ. Relationship between genetic polymorphisms of metabolizing enzymes and prostate cancer [Article in Chinese]. *Zhonghua Nan Ke Xue.* 2003;9(1):32-5.
  29. Narod SA, Dupont A, Cusan L, Diamond P, Gomez JL, Suburu R, et al. The impact of family history on early detection of prostate cancer. *Nat Med.* 1995;1(2):99-101.

30. Hankey BF, Feuer EJ, Clegg LX, Hayes RB, Legler JM, Prorok PC, et al. Cancer surveillance series: interpreting trends in prostate cancer--part I: Evidence of the effects of screening in recent prostate cancer incidence, mortality, and survival rates. *J Natl Cancer Inst.* 1999;91(12):1017-24.
31. Zeegers MP, Jellema A, Ostrer H. Empiric risk of prostate carcinoma for relatives of patients with prostate carcinoma: a meta-analysis. *Cancer.* 2003;97(8):1894-903.
32. Steinberg GD, Carter BS, Beaty TH, Childs B, Walsh PC. Family history and the risk of prostate cancer. *Prostate.* 1990;17(4):337-47.
33. Vermeulen A, Kaufman JM, Goemaere S, van Pottelberg I. Estradiol in elderly men. *Ageing Male.* 2002;5(2):98-102.
34. Linja MJ, Savinainen KJ, Tammela TL, Isola JJ, Visakorpi T. Expression of ERalpha and ERbeta in prostate cancer. *Prostate.* 2003;55(3):180-6.
35. Horvath LG, Henshall SM, Lee CS, Head DR, Quinn DI, Makela S, et al. Frequent loss of estrogen receptor-beta expression in prostate cancer. *Cancer Res.* 2001;61(14):5331-5.
36. Petersen DD, McKinney CE, Ikeya K, Smith HH, Bale AE, McBride OW, et al. Human CYP1A1 gene: cosegregation of the enzyme inducibility phenotype and an RFLP. *Am J Hum Genet.* 1991;48(4):720-5.
37. Cosma G, Crofts F, Taioli E, Toniolo P, Garte S. Relationship between genotype and function of the human CYP1A1 gene. *J Toxicol Environ Health.* 1993;40(2-3):309-16.
38. Crofts F, Taioli E, Trachman J, Cosma GN, Currie D, Toniolo P, et al. Functional significance of different human CYP1A1 genotypes. *Carcinogenesis.* 1994; 15(12):2961-3.
39. Kiyohara C, Hirohata T, Inutsuka S. The relationship between aryl hydrocarbon hydroxylase and polymorphisms of the CYP1A1 gene. *Jpn J Cancer Res.* 1996;87(1):18-24.
40. Murata M, Watanabe M, Yamanaka M, Kubota Y, Ito H, Nagao M, et al. Genetic polymorphisms in cytochrome P450 (CYP) 1A1, CYP1A2, CYP2E1, glutathione S-transferase (GST) M1 and GSTT1 and susceptibility to prostate cancer in the Japanese population. *Cancer Lett.* 2001;165(2):171-7.
41. Chang BL, Zheng SL, Isaacs SD, Turner A, Hawkins GA, Wiley KE, et al. Polymorphisms in the CYP1A1 gene are associated with prostate cancer risk. *Int J Cancer.* 2003;106(3):375-8.
42. Suzuki K, Matsui H, Nakazato H, Koike H, Okugi H, Hasumi M, et al. Association of the genetic polymorphism in cytochrome P450 (CYP) 1A1 with risk of familial prostate cancer in a Japanese population: a case-control study. *Cancer Lett.* 2003;195(2):177-83.
43. Aktas D, Hascicek M, Sozen S, Ozen H, Tuncbilek E. CYP1A1 and GSTM1 polymorphic genotypes in patients with prostate cancer in a Turkish population. *Cancer Genet Cytogenet.* 2004;154(1):81-5.
44. Yang J, Qian LX, Wu HF, Xu ZQ, Sui YG, Wang XR, et al. Genetic polymorphisms in the cytochrome P450 1A1 and 2E1 genes, smoking, drinking and prostate cancer susceptibility: a case-control study in a Han nationality population in Southern China. *Int J Urol.* 2006;13(6):773-80.
45. Mittal RD, Srivastava DL. Cytochrome P4501A1 and microsomal epoxide hydrolase gene polymorphisms: gene-environment interaction and risk of prostate cancer. *DNA Cell Biol.* 2007;26(11):791-8.
46. Li H, Xiao D, Hu L, He T. Association of CYP1A1 polymorphisms with prostate cancer risk: an updated meta-analysis. *Mol Biol Rep.* 2012;39(12):10273-84.

# SID



سرویس های  
ویژه



سرویس ترجمه  
تخصصی



کارگاه های  
آموزشی



بلاگ  
مرکز اطلاعات علمی



عضویت در  
خبرنامه



فیلم های  
آموزشی

## کارگاه های آموزشی مرکز اطلاعات علمی جهاد دانشگاهی



مباحث پیشرفته یادگیری عمیق؛  
شبکه های توجه گرافی  
(Graph Attention Networks)



کارگاه آنلاین آموزش استفاده از  
وب آوساینس



کارگاه آنلاین مقاله روزمره انگلیسی